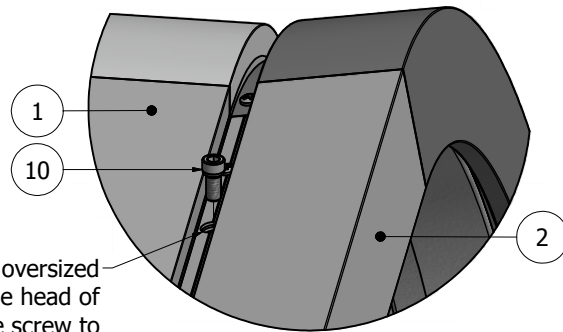
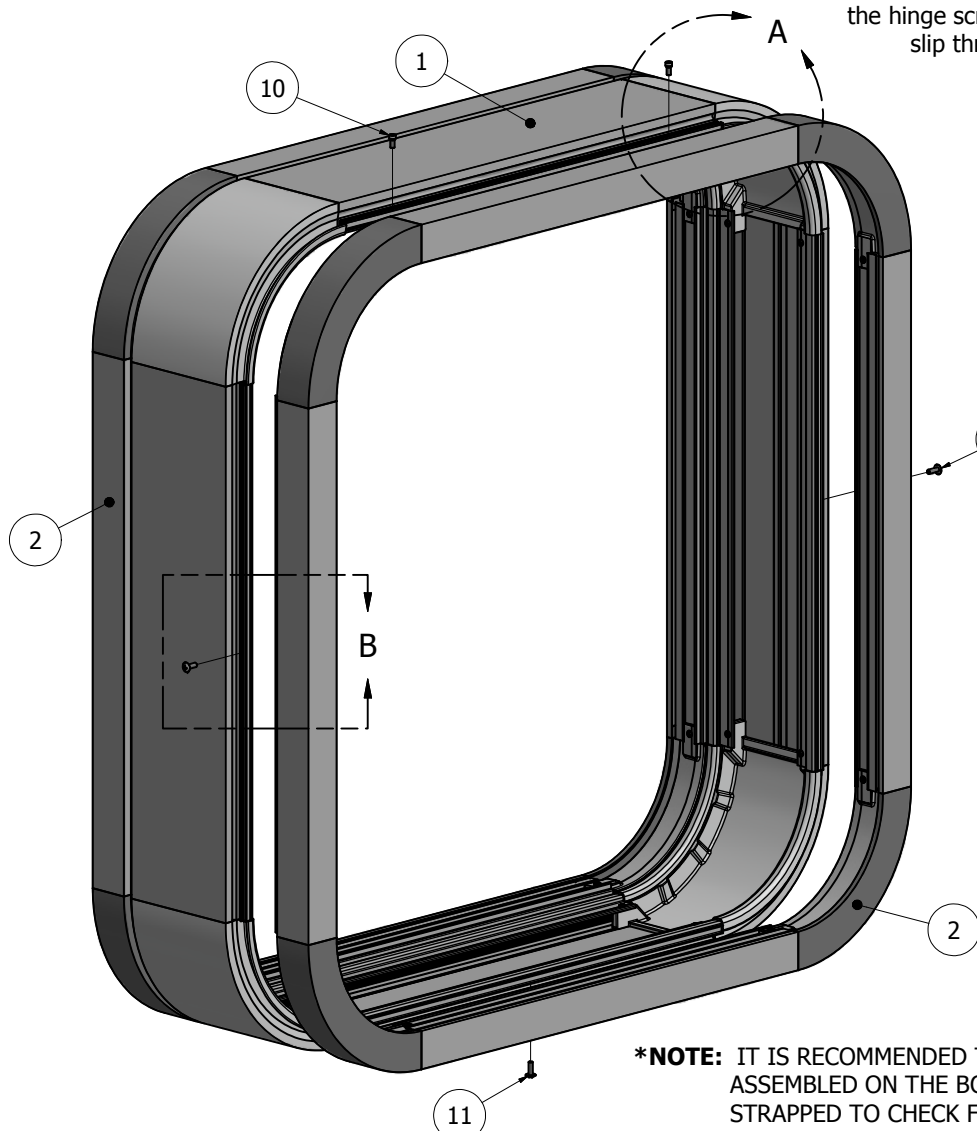


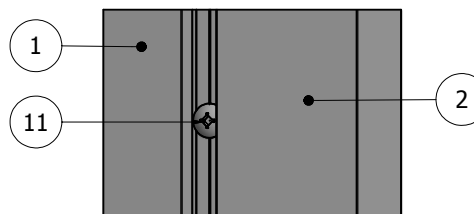
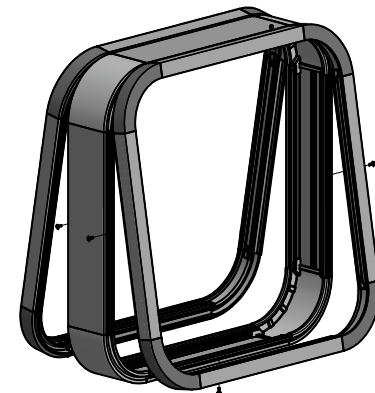
PARTS LIST			
ITEM	PART#	DESCRIPTION	NOTES
1	K2015/4050	Medium Body w/ 9in Radius Corners	Assembly
2	K2065/75/4200	Dual Frame & 2-1/4" Frame Cover w/ 9in Radius Corners & Covers	Assembly
10	5170	Hinge Screw	Drill 3/8" pilot hole
11	5180	Closure Screw	Drill 5/16" pilot hole

Ship To:  
Sales Order#

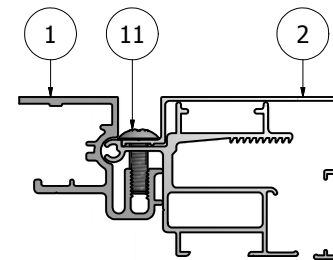
**\*NOTE:** Drill a 3/8" oversized hole for the head of the hinge screw to slip through.



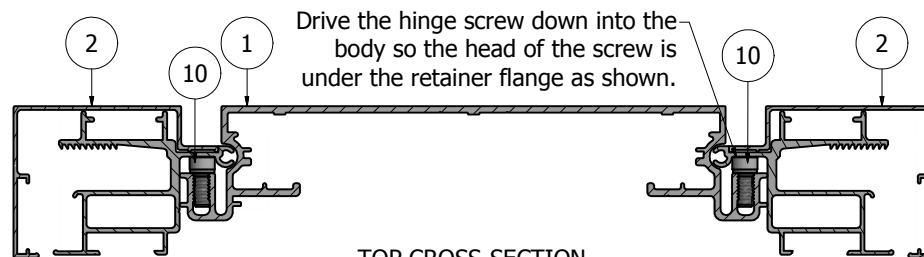
DETAIL A



DETAIL B  
FRAME CLOSED



DETAIL B  
CROSS-SECTION



TOP CROSS-SECTION

**\*NOTE: PRE-CUT KITS ARE NOT PRE-DRILLED.**  
(Holes shown in this drawing are for reference only.  
Drilling of pilot holes are to be done by fabricator.)

THIS DRAWING WAS CREATED AT NO CHARGE TO ASSIST YOU IN VISUALIZING OUR PROPOSAL. THE DRAWING HEREIN IS THE PROPERTY OF SIGNCOMP. PERMISSION TO COPY OR REVISE THIS DRAWING OR TO USE THIS DRAWING FOR PRODUCTION IS STRICTLY PROHIBITED AND CAN ONLY BE COPIED, REVISED OR USED FOR PRODUCTION WITH THE EXPRESSED WRITTEN PERMISSION OF SIGNCOMP.

DRAWING BY:	SBreihof	3/31/2014
Centroid X:	0.000 in	
Centroid Y:	0.000 in	
Principal Moments Ix:	0.000 in <sup>4</sup>	
Principal Moments Iy:	0.000 in <sup>4</sup>	
Section Modulus Ix:	0.000 in <sup>3</sup>	
Section Modulus Iy:	0.000 in <sup>3</sup>	

**SignComp**

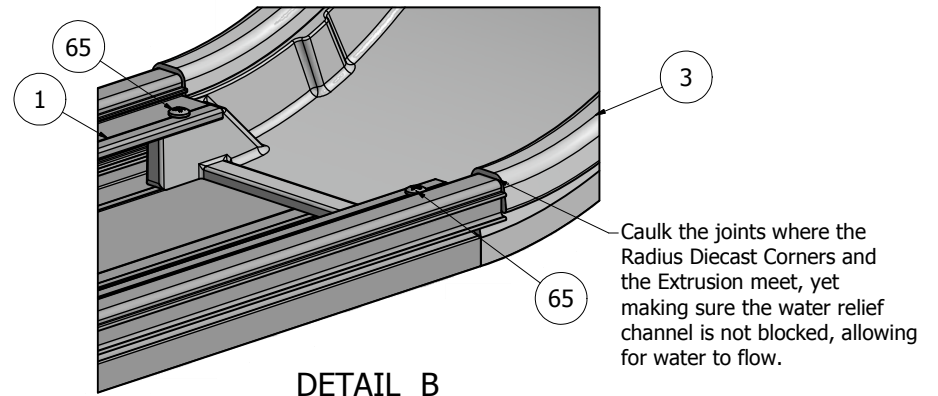
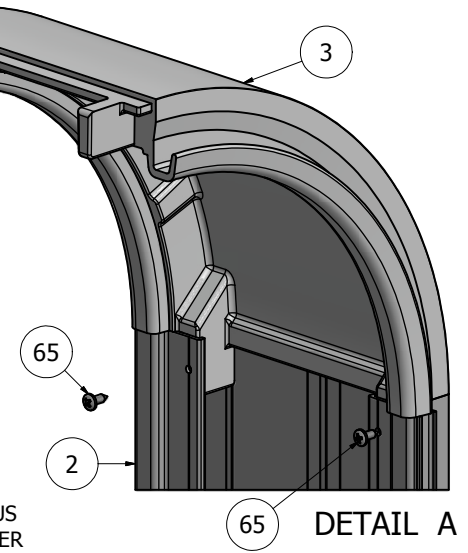
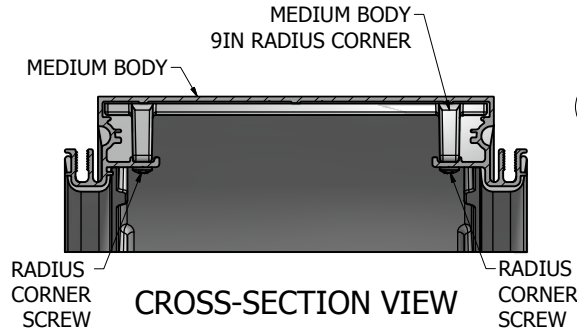
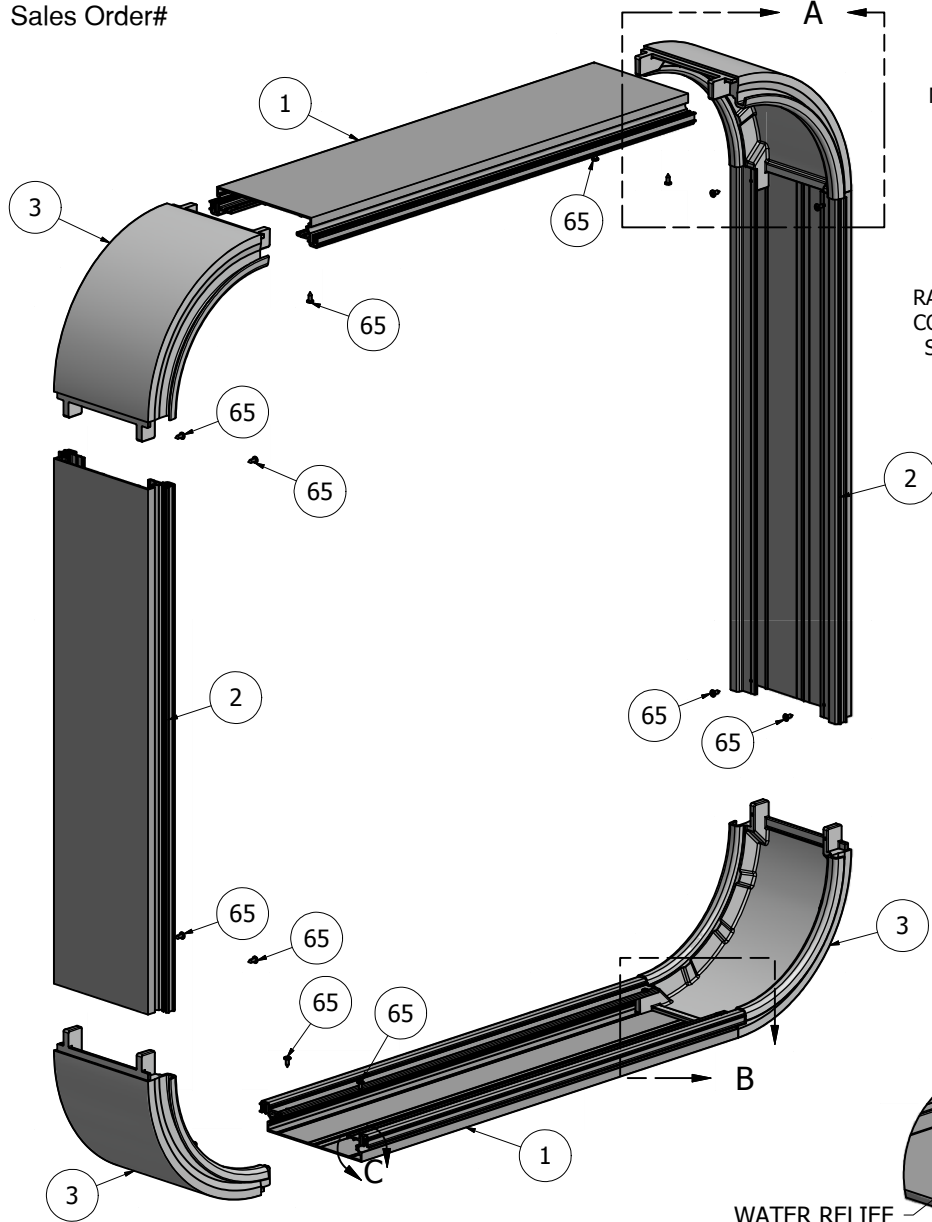
TITLE  
Medium Body w/ Dual Frame & 2-1/4" Dual Frame Cover and 9in Radius Corners - Assembly

PART NO **KMB/65/75/4540** REV

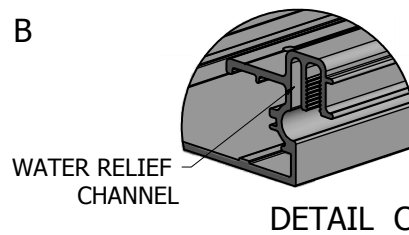
PARTS LIST			
ITEM	PART #	DESCRIPTION	NOTES
1	2015	Medium Body	Top & Bottom
2	2015	Medium Body	Sides
3	4050	Medium Body 9in Radius Corner	
65	5218	Radius Corner Screw	Drill 5/32" pilot hole

**\*NOTE:** RADIUS CORNERS ARE DESIGNED TO BE WELDED, HOWEVER CAN ALSO BE MECHANICALLY ASSEMBLED.

Ship To:  
Sales Order#



**NOTE: PRE-CUT KITS ARE NOT PRE-DRILLED.**  
(Holes shown in this drawing are for reference only. Drilling of pilot holes are to be done by fabricator.)



THIS DRAWING WAS CREATED AT NO CHARGE TO ASSIST YOU IN VISUALIZING OUR PROPOSAL. THE DRAWING HEREIN IS THE PROPERTY OF SIGNCOMP. PERMISSION TO COPY OR REVISE THIS DRAWING OR TO USE THIS DRAWING FOR PRODUCTION IS STRICTLY PROHIBITED AND CAN ONLY BE COPIED, REVISED OR USED FOR PRODUCTION WITH THE EXPRESSED WRITTEN PERMISSION OF SIGNCOMP.

DRAWING BY:	SBreihof	6/26/2013
Centroid X:	0.000 in	
Centroid Y:	0.000 in	
Principal Moments Ix:	0.000 in <sup>4</sup>	
Principal Moments Iy:	0.000 in <sup>4</sup>	
Section Modulus Ix:	0.000 in <sup>3</sup>	
Section Modulus Iy:	0.000 in <sup>3</sup>	

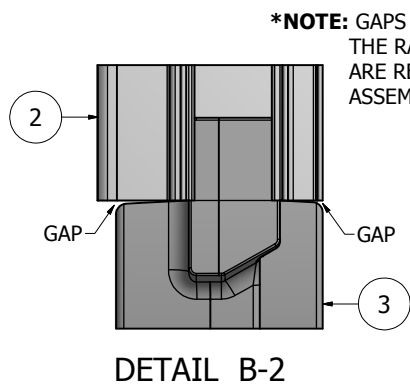
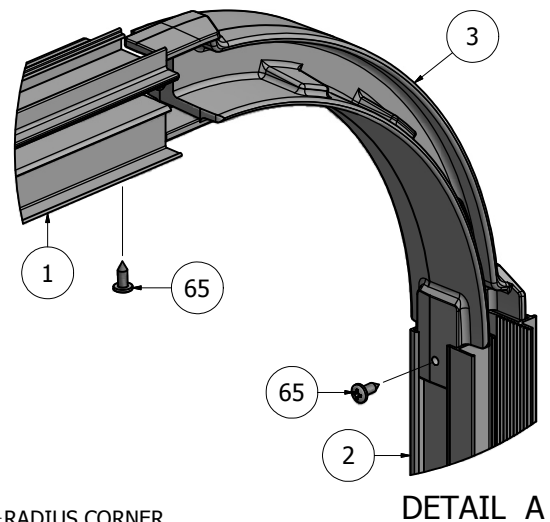
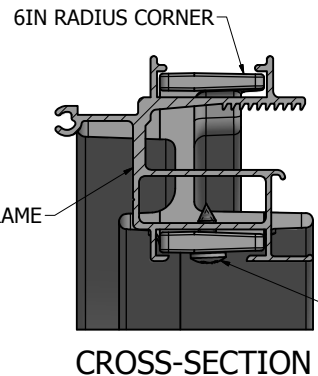
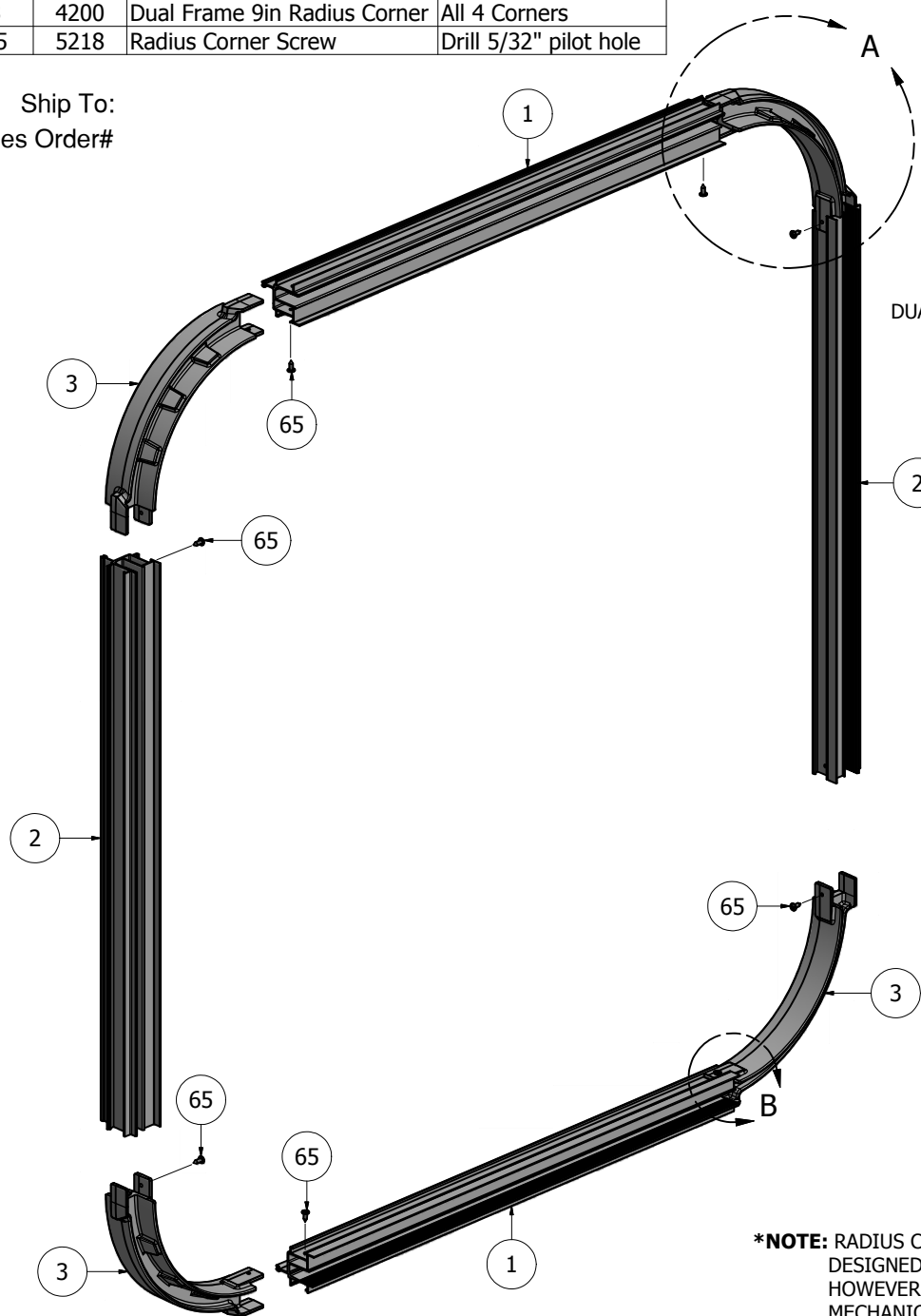
**SignComp**

Medium Body w/ 9in Radius Corners - Assembly

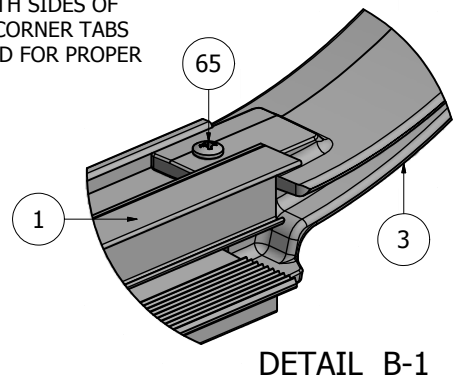
PART NO	<b>KMB-4050</b>	REV
---------	-----------------	-----

PARTS LIST			
ITEM	PART#	DESCRIPTION	NOTES
1	2065	Dual Frame	Top & Bottom
2	2065	Dual Frame	Sides
3	4200	Dual Frame 9in Radius Corner	All 4 Corners
65	5218	Radius Corner Screw	Drill 5/32" pilot hole

Ship To:  
Sales Order#



**\*NOTE:** GAPS ON BOTH SIDES OF THE RADIUS CORNER TABS ARE REQUIRED FOR PROPER ASSEMBLY.



**\*NOTE:** RADIUS CORNERS ARE DESIGNED TO BE WELDED, HOWEVER CAN ALSO BE MECHANICALLY ASSEMBLED.

**NOTE: PRE-CUT KITS ARE NOT PRE-DRILLED.**  
(Holes shown in this drawing are for reference only. Drilling of pilot holes are to be done by fabricator.)

THIS DRAWING WAS CREATED AT NO CHARGE TO ASSIST YOU IN VISUALIZING OUR PROPOSAL. THE DRAWING HEREIN IS THE PROPERTY OF SIGNCOMP. PERMISSION TO COPY OR REVISE THIS DRAWING OR TO USE THIS DRAWING FOR PRODUCTION IS STRICTLY PROHIBITED AND CAN ONLY BE COPIED, REVISED OR USED FOR PRODUCTION WITH THE EXPRESSED WRITTEN PERMISSION OF SIGNCOMP.			
DRAWN	SBreihof	12/19/2012	<b>SignComp</b>
Centroid X:	0.000 in	TITLE	
Centroid Y:	0.000 in	Dual Frame with 9in Radius Corners - Assembly	
Principal Moments Ix:	0.000 in <sup>4</sup>	DWG NO	REV
Principal Moments Iy:	0.000 in <sup>4</sup>	<b>2065-4200</b>	
Section Modulus Ix:	0.000 in <sup>3</sup>	SHEET 1 OF 1	
Section Modulus Iy:	0.000 in <sup>3</sup>		

PARTS LIST			
ITEM	PART#	DESCRIPTION	NOTES
1	2065/4200	Dual Frame with 9in Radius Corners	Assembly
2	2075	2 1/4" Dual Frame Cover	Top and Bottom
3	2075	2 1/4" Dual Frame Cover	Sides
4	4220P	9in Dual Frame Radius Cover	
12	5195	Cover Screw	Pre-drill 3/32" hole
15	5195	Radius Corner Cover Screw	Pre-drill 3/32" hole

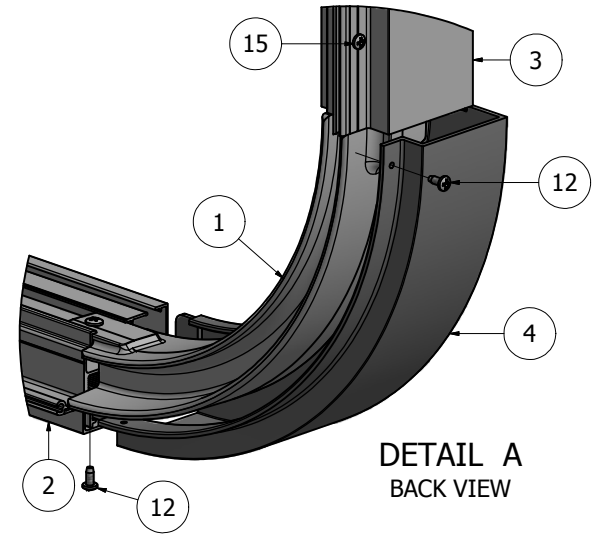
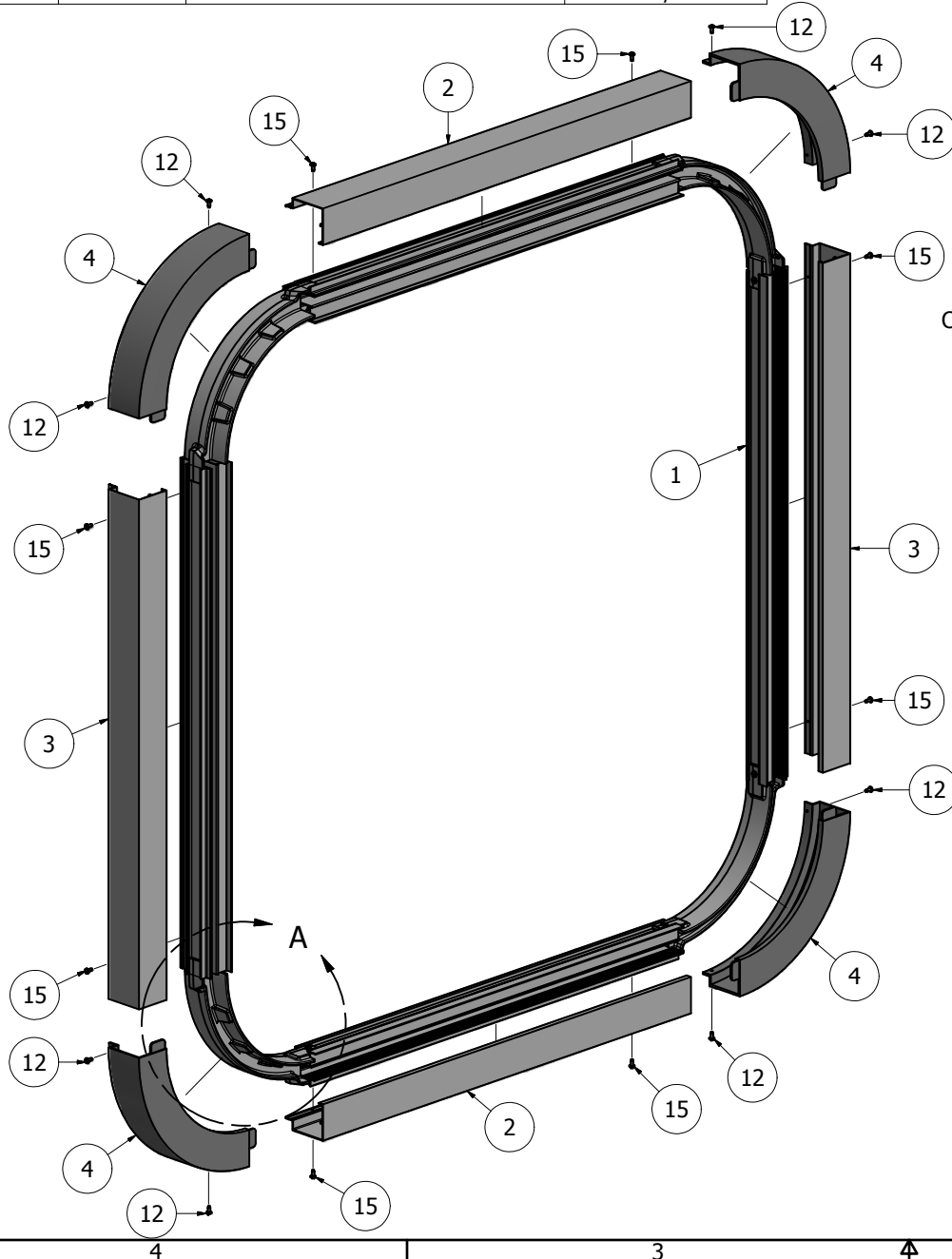
Ship To:  
Sales Order#

D

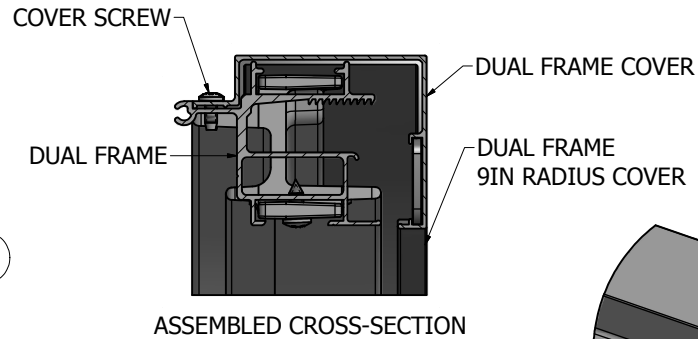
C

B

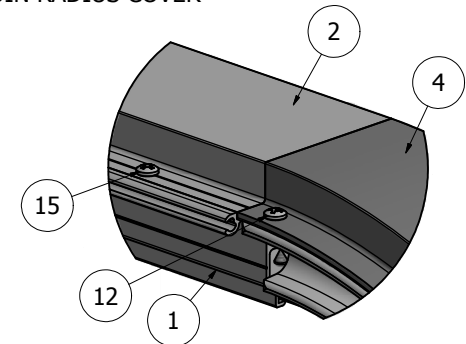
A



DETAIL A  
BACK VIEW



ASSEMBLED CROSS-SECTION



ASSEMBLED BACK VIEW

**NOTE: PRE-CUT KITS ARE NOT PRE-DRILLED.**  
(Holes shown in this drawing are for reference only.  
Drilling of pilot holes are to be done by fabricator.)

THIS DRAWING WAS CREATED AT NO CHARGE TO ASSIST YOU IN VISUALIZING OUR PROPOSAL. THE DRAWING HEREIN IS THE PROPERTY OF SIGNCOMP. PERMISSION TO COPY OR REVISE THIS DRAWING OR TO USE THIS DRAWING FOR PRODUCTION IS STRICTLY PROHIBITED AND CAN ONLY BE COPIED, REVISED OR USED FOR PRODUCTION WITH THE EXPRESSED WRITTEN PERMISSION OF SIGNCOMP.

DRAWN	SBreihof	12/20/2012	<b>SignComp</b>
Centroid X:	0.000 in	TITLE	
Centroid Y:	0.000 in	Dual Frame and 2 1/4" Dual Frame Cover w/ 9in Radius Corner Cover - Assembly	
Principal Moments Ix:	0.000 in <sup>4</sup>	DWG NO	REV
Principal Moments Iy:	0.000 in <sup>4</sup>	<b>K2065-75-4220P</b>	
Section Modulus Ix:	0.000 in <sup>3</sup>	SHEET 1 OF 1	
Section Modulus Iy:	0.000 in <sup>3</sup>		